

# Carbon footprint Fiskano Scope 1 & 2

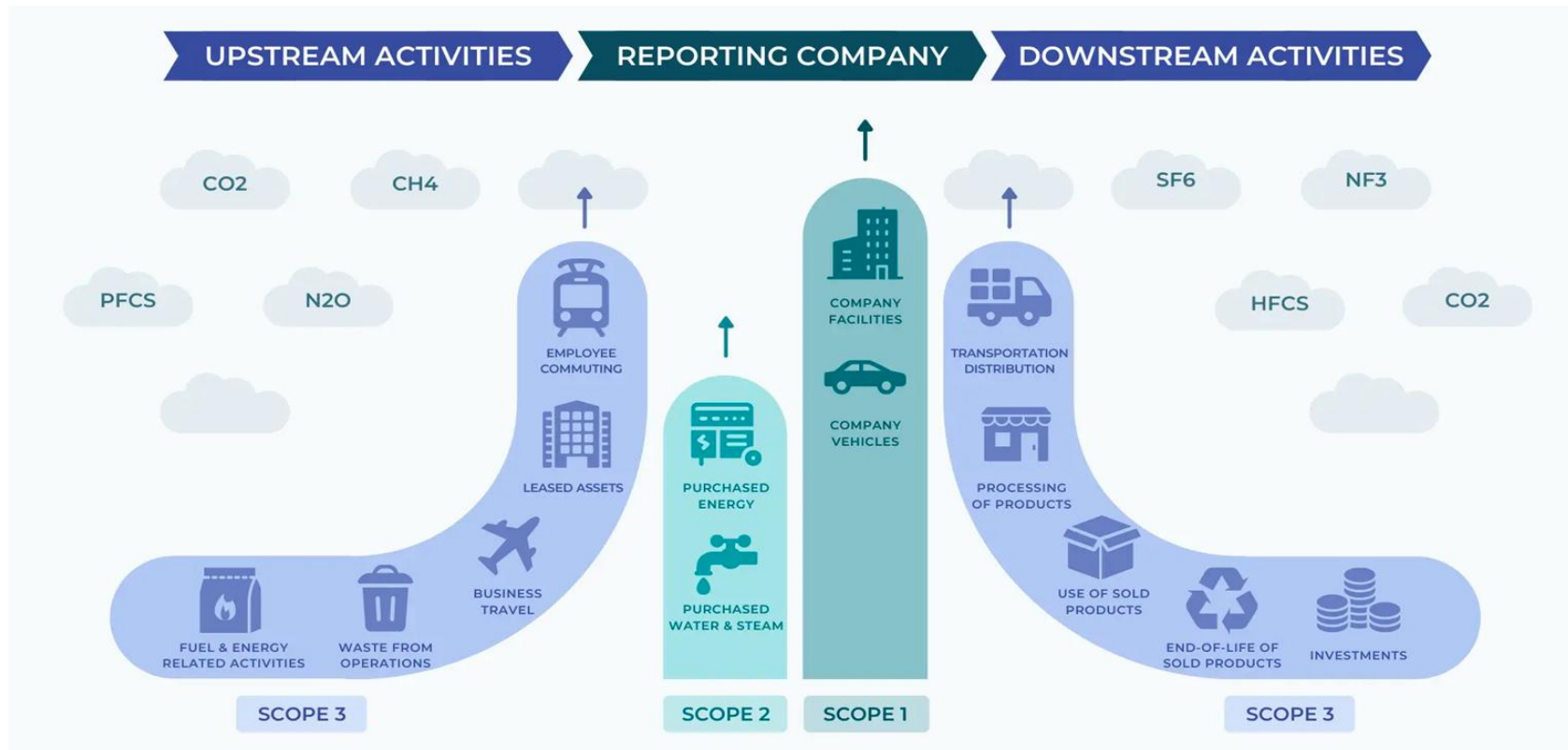
A Greener Company report  
March 2026



# What is a Carbon Footprint?

## Scope 1 & 2

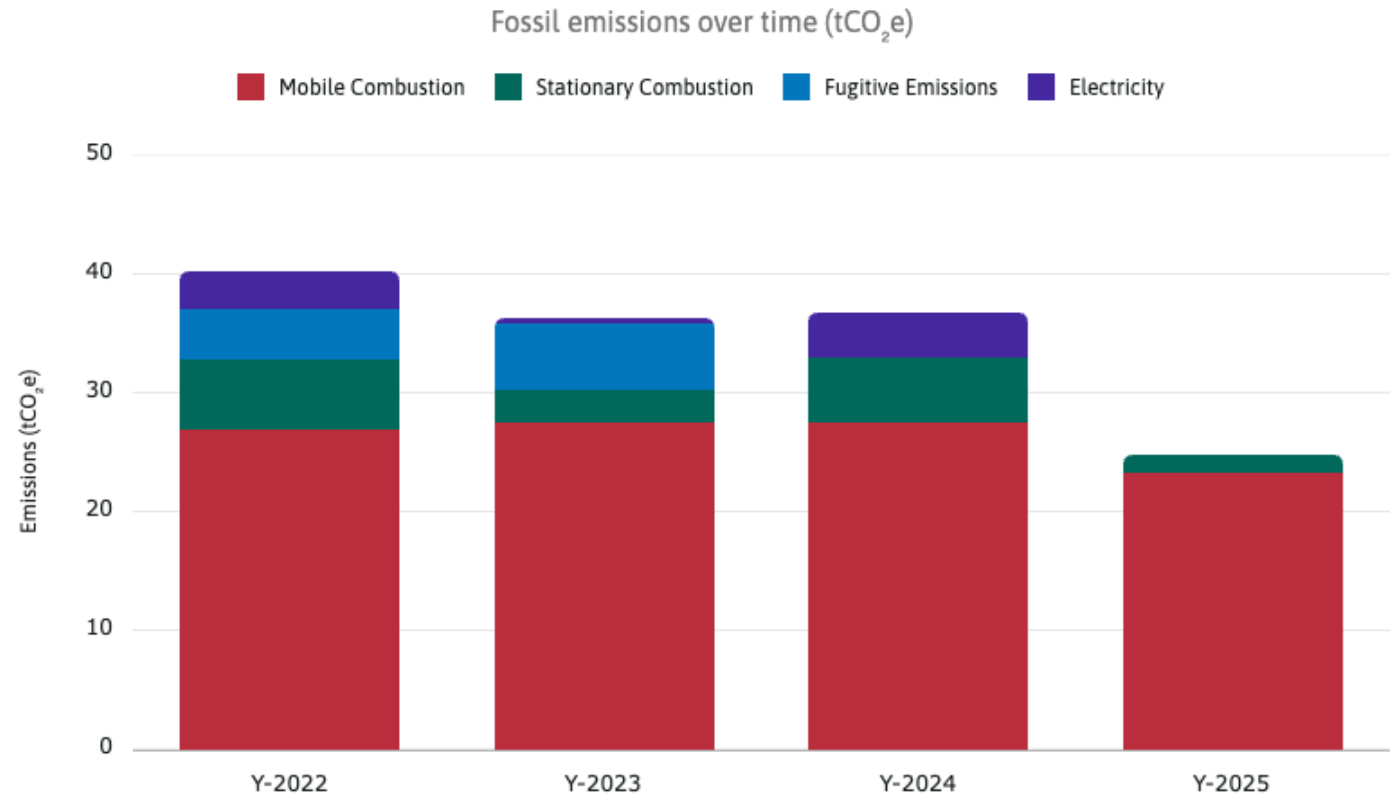
A carbon footprint represents the total greenhouse gas emissions of an organization. It forms the foundation for identifying and reducing climate impact. Scope 1 and 2 include emissions from owned operations (e.g. fuel use) and purchased energy, such as electricity. This report is prepared in accordance with the GHG Protocol.



# Results Carbon Footprint Fiskano

In 2025, Fiskano reduced its Scope 1 and 2 emissions from 36.7 tCO<sub>2</sub>e in 2024 to 24.8 tCO<sub>2</sub>e — **a reduction of nearly 33% within one year.**

This decrease was driven by the relocation to a sustainable, energy-neutral office and the transition to green electricity. As a result, emissions from stationary combustion and office electricity are expected to be eliminated from 2026 onwards.

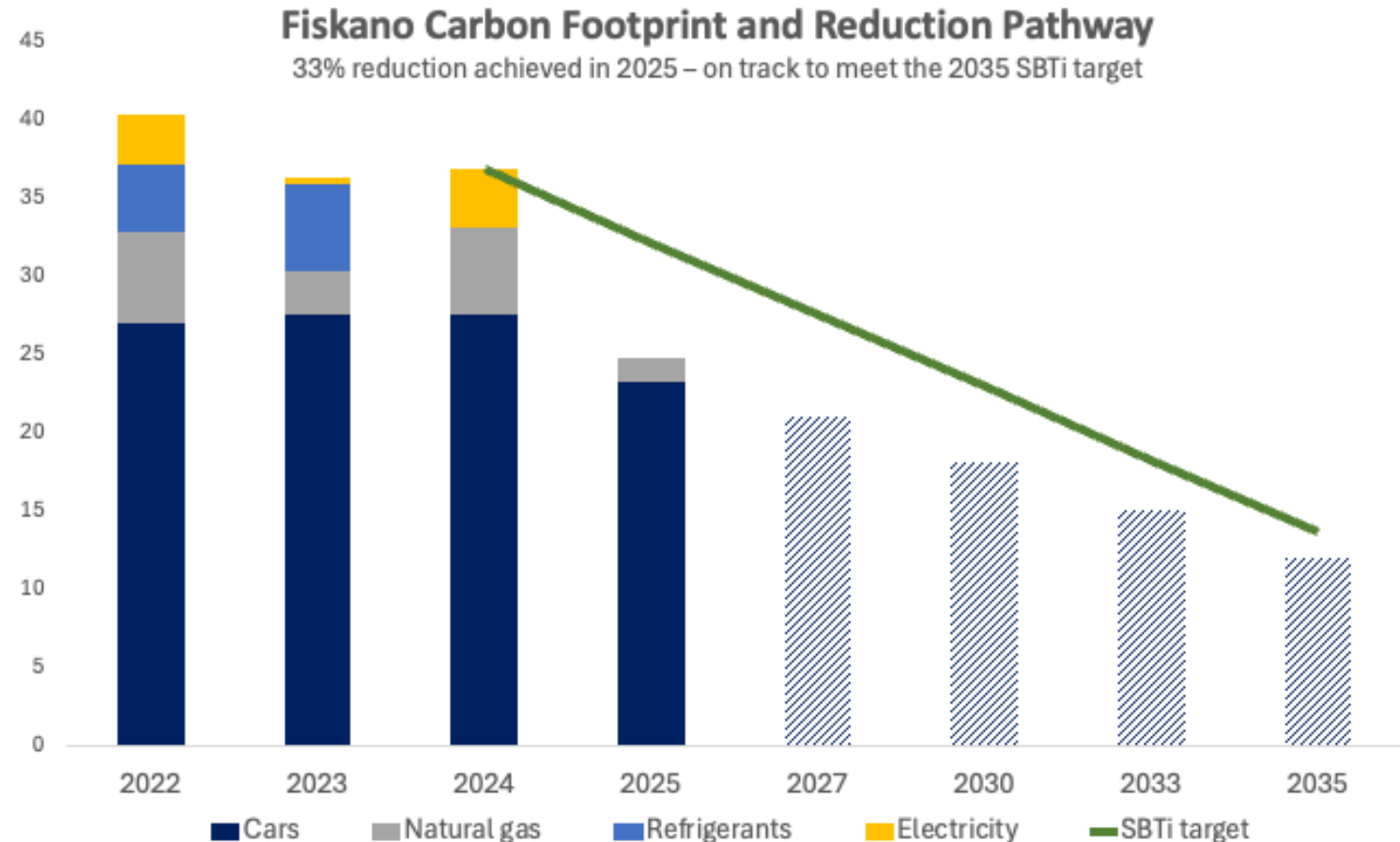


# Our Target

## Fiskano is a SBTi committed company

Fiskano is committed to reducing its Scope 1 and 2 emissions by 63% by 2035, using 2024 as the baseline year. This target is validated by the Science Based Targets initiative (SBTi).

To achieve the remaining reduction, Fiskano has introduced a revised mobility policy.



Scope 1 and 2 carbon footprint for the years 2022–2025 and reduction pathway for 2027–2035.



# Fiskano mobility policy

## Deep dive car fleet

- In 2024, 11,135 liters of petrol and 1,847 liters of LPG were consumed, equivalent to approximately 200,000 kilometers driven. To meet the SBTi target, emissions in 2030 must not exceed 13.5 tCO<sub>2</sub>, corresponding to approximately 5,800 liters of petrol or 90,000 kilometers driven.
- This level of mileage is not aligned with Fiskano's growth ambitions. The following transition pathways have been considered:
  - **Electric vehicles (EVs):** When powered by green electricity, EVs result in zero emissions. A range of affordable models is available.
  - **Plug-in hybrids (PHEVs):** A suitable interim solution for shorter distances, enabling partial electric driving.
  - **Diesel with HVO100:** For high-mileage field staff, diesel combined with HVO100 biofuel can reduce emissions by up to 90% in carbon accounting. However, this option is significantly more expensive than conventional diesel.
- Under the new policy, new vehicles are required to be fully electric. Exceptions may only be made where this is demonstrably unfeasible due to location constraints or long-distance travel requirements for sales staff operating in specific regions.



**Questions about this report?  
Info@greenercompany.nl**

